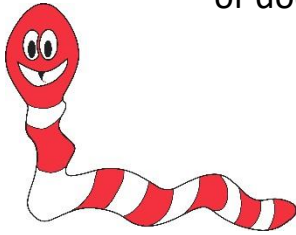


Hair SHEEP

By Susan Schoenian, Sheep & Goat Specialist Emeritus, University of Maryland Extension. Updated for 2025.

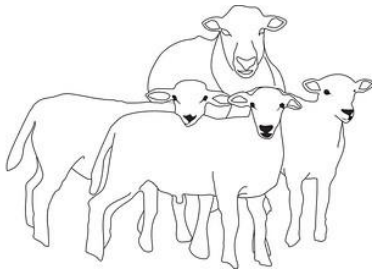
Easy care

Hair sheep naturally shed their winter coats and don't usually require shearing, crutching, or docking.



Worm resistant

Though it varies by breed, hair sheep tend to be more resistant to worm parasites, like the barber pole worm. The St. Croix is the most parasite resistant breed in the US.



Good at making babies

Besides being easy care, hair sheep have a high level of reproduction. They are known for their early puberty, multiple births, mothering ability, and out-of-season breeding.

Hair sheep

are raised throughout the US but are most popular in Texas and the eastern half of the US.

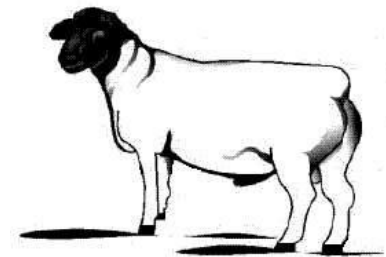


27 percent

of sheep in the US are now hair sheep or hair x wool crosses (NASS, 2025). Notably Texas has a large hair sheep population. More than 90 percent of the lambs sold at Producers Livestock Auction in San Angelo are hair. The percentage is about 50:50 at New Holland Sales Stables (in Pennsylvania).

Katahdin and Dorper are the two most popular breeds of sheep in the US, as measured by the number of purebred registrations and transfers.

Top two



Hair Sheep Primer

<http://www.sheep101.info/201/hairsheep.html>