



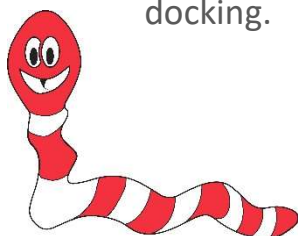
Hair SHEEP



UNIVERSITY OF
MARYLAND
EXTENSION

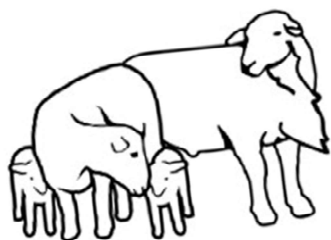
Easy care

Hair sheep naturally shed their winter coats and don't usually require shearing, crutching, or docking.



Fewer worms

Though it varies by breed, hair sheep tend to be more resistant to worm, like the barber pole worm. The St. Croix is the most parasite resistant breed in the US.



Good at making babies

Besides being easy care, hair sheep have a high level of reproduction. They are known for their early puberty, multiple births, mothering ability, and out-of-season breeding.

Hair sheep

are raised throughout the US but are most popular in Texas and the eastern half of the US.

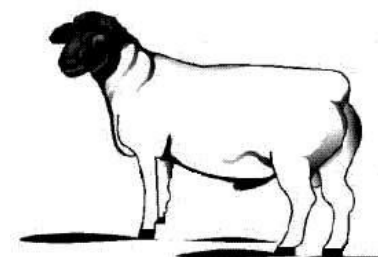


11% and increasing

In 2011, hair sheep comprised 11% of the US sheep population (NAHMS). Almost 22% of sheep operations raised hair sheep then, compared to only 1% in 1996. In 2018, more than 90% of the lambs sold at the auction in San Angelo (Texas) were hair sheep.

Top two

As of March 2020, Dorpers and Katahdins were the two most popular breeds of sheep in the US, as measured by the number of purebred registrations and transfers.



Hair Sheep Primer

<http://www.sheep101.info/201/hairsheep.html>